

MLT *NEW AG* RANGE
Agricultural telehandlers



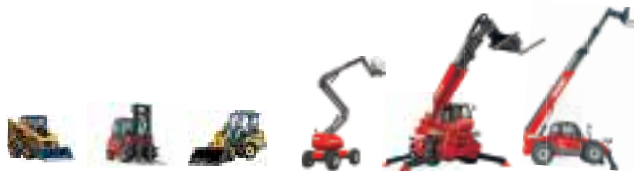
Handling your world

Founded over 60 years ago by the Braud family, the Manitou Group now operates worldwide. A world-leader in all-terrain material handling, the Group designs, manufactures, distributes and services equipment for construction, agriculture and industries.

The Group's product ranges include: all-terrain fixed, rotating and heavy-load telehandlers; all-terrain, semi-industrial and industrial masted forklift trucks; wheel or track skid-steer loaders; articulate loaders; access platforms; truck-mounted forklifts; warehousing equipment; and attachments.

Through its iconic brands - Manitou, Gehl and Mustang - and its worldwide network of 1,400 dealers, the Group offers the best solutions to create optimum value for its customers.

Headquartered in France, the Group registered a revenue in 2016 of 1.332 billion euros in 140 countries and employs 3,300 people, all strongly focused on satisfying customers.



1958

Marcel Braud conceives the idea of the Manitou truck.

1972

The Group enters foreign markets.

Sales partnership agreement signed with Toyota for exclusive distribution of Toyota industrial forklift trucks in France.

1981

Launch of first Manitou telehandler.

1984

Manitou enters the stock exchange.

1993

The first MRT rotating telehandlers are sold.

1995

Launch of the first range of access platforms.

1996

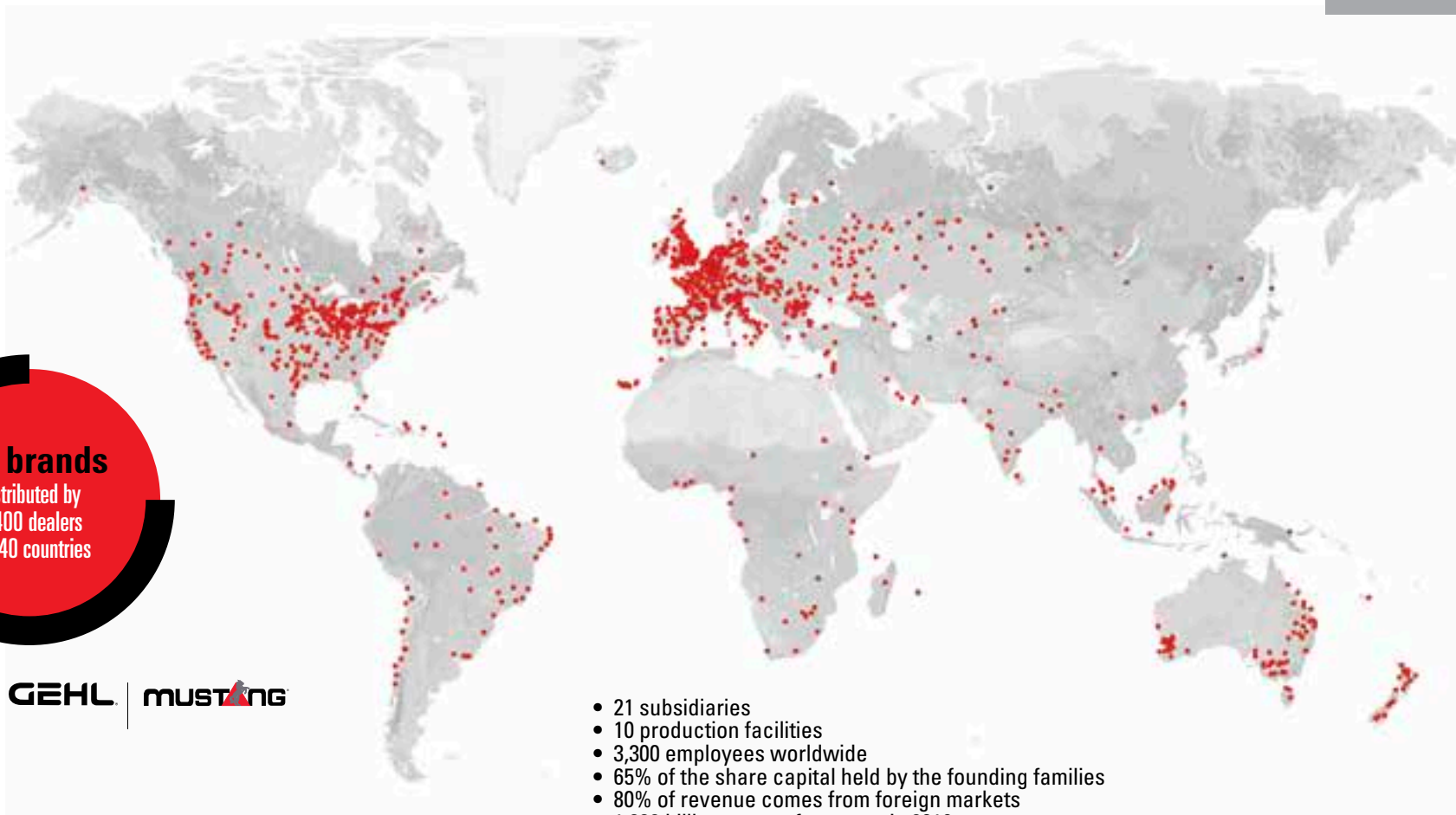
ISO 9001 certification obtained.

1998

Marcel Braud becomes Chairman of the Supervisory Board.

2006

Manitou passes the 1 billion euros sales milestone.



3 brands
distributed by
1,400 dealers
in 140 countries



- 21 subsidiaries
- 10 production facilities
- 3,300 employees worldwide
- 65% of the share capital held by the founding families
- 80% of revenue comes from foreign markets
- 1.332 billion euros of turnover in 2016

2007

Manitou opens an international logistics centre spanning 22,000 m².

2008

Takeover of the American company Gehl.

2009

Change of management - return to a Board of Directors.

2010

Launch of Gehl and Mustang articulated loaders.

2012

Crossover agreement signed with Yanmar for the manufacture and distribution of mini-excavators.

2013

Consolidation of Yanmar partnership as Yanmar becomes a Group shareholder with 6.26% of the capital.

2014

January: Michel Denis is appointed President and CEO.
April: A new roadmap is drawn up focusing on the three divisions, including one for services.

2015

Manitou celebrates the sale of its 500,000th machine worldwide.



2016

Launch of the new MLT range, NewAg.







CONTENTS
NewAg

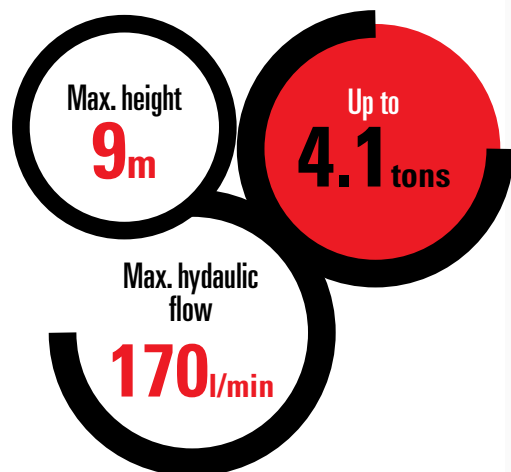
Panoramic visibility	10
Manitou design	14
Sufficient power	22
Efficient cooling	24
A choice of transmissions	26
All terrain manoeuvrability	28
Designed to last	30
Time saving	32
Make your life easier	38
MLT NewAg range	42
Selection of attachments	50
Range of towing hooks	52
Manitou is here to help	56
The REDUCE program	58

NewAg

Your future, our vision

The new range of Manitou agricultural telehandlers, NewAg, was designed to assist in your everyday work and to meet with the needs that you have expressed to our network of dealers at trade shows, on our website and on the Manitou social networks.

Because your profession is demanding and essential, the NewAg range focuses on **comfort, performance and cost efficiency**. Discover all the developments and technological choices that help improve your profitability every day.





- Wide-view windscreen
- Optimal lighting: standard work lights and LED+ option
- Rear-view mirror with adjustable support
- Cab access with an "Easy step"
- Full-comfort cab: Harmony or Vision* screen, your choice of position for "DSB" buttons, soundproof cab, a number of storage compartments, and more.
- Joystick Switch and Move (JSM®) on floating armrest
- Engine power: 101, 129, 136 hp
- Emission standards Stage IV / Final Tier 4
- Auto reversing fan*
- Several types of transmission*: torque converter (with Powershuttle or Powershift Plus gearbox), M-Varioshift, M-Vario Plus
- High-speed simultaneous movements thanks to flow sharing distributor*
- "Active CRC"" boom suspension
- Large range of original attachments approved by Manitou
- Easy Connect System (ECS)
- Several towing hooks available
- Large choice of tyres
- Easy access central greasing points
- Easy MANAGER ready

*Depending on models and/or versions





DESIGNED FOR COMFORT

Comfort and productivity are closely linked. That is why our telehandlers provide an optimal level of ergonomics and all the features that you need to fully concentrate on your activity.

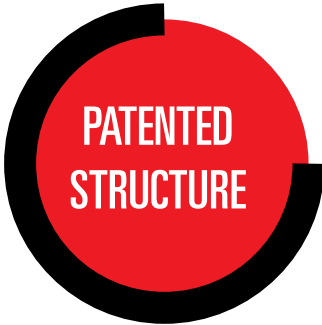


PANORAMIC VISIBILITY

A redesigned visibility

The NewAg models feature exceptional visibility. The angle of each blade of the roof grid has been meticulously adjusted in relation to the lifting height to offer you a clear view of the load, regardless of its position.

The low position of the boom articulation point and the one-piece windscreen offer you 360° visibility, guaranteeing your safety and the safety of those around you.



**PATENTED
STRUCTURE**



Extra front wiper*

An additional windscreen wiper offers a perfectly clear view of the front of the machine.

Electric mirror with de-icing*

The exterior right rear view mirror may be easily adjusted from the interior of the cab. The defrosting function makes it possible to work efficiently in all weather conditions.

*standard or optional, according to the level of finish



LED+ option

The LED+ option offers the highest standard of work lighting with optimum light positioning all around the machine:

- 1 behind the cab on the left side,
 - 2 in front of the machine, on the right side,
- 1 behind the machine over the towing hook.



Optimal lighting

A machine fitted out for night work:

- 4 work lights on the cab (halogen or LED, depending on the level of finish),
- 1 roof light inside the cab,
- 2 boom-mounted LED work lights (optional).

Cab ventilation

Even in dusty conditions,
you'll breathe easily thanks to:

- adjustable air vents
- and two cab filters.





MANITOU DESIGN DEDICATED TO YOUR WELL-BEING

You won't see the time go by in your machine!

Enjoy equipment perfectly suited to your needs:
a cloth covered seat, a steering column
with adjustable height and depth,
a sun visor, an electric window,
a USB slot, a 12V plug, and more.

Because silence is a factor of well-being, we also
consider cab soundproofing a major priority (just 73 dB).

If you get fed up with silence occasionally,
you can always turn on the radio!

For additional comfort, your personal belongings may
easily be stowed away in any of the many spacious
storage compartments.





73
dB (A)

Automotive standard
(same noise as a car running at 100 kph)

Tested following NF EN 12053 norm



Easy-access cab

The access to the driving station has been entirely redesigned. This model offers cab access via a proper set of steps. The non-slip step and large handles on the cab frame make it even easier to climb up and down.





Clear, modular dashboard

Behind the wheel of the NewAg, all the controls are within reach and are clearly identified with symbols and colour codes.

And because everyone has their own way of doing things, you can choose the position of your "DSB" buttons: an essential time-saver that enables you to concentrate on the work at hand!

2 screens 2 moods...

Whatever level of finish you choose, the cab screen indicates the maintenance frequency, moving speed, time of day, and other useful information. More than 80 pop-ups are also available to assist you in your daily work.





Manitou works hard to make your workday easier!

Exclusive to Manitou, the JSM® on the floating armrest allows safe, fatigue free operation. Each movement can be carried out with one hand including : forwards / reverse, raising and lowering of the boom, boom extension / retraction, tilt / crowd and hydraulic operations on the attachment. One hand stays on the wheel so you keep total control over your machine.

- ❶ FNR (Front Neutral Reverse) button
- ❷ Hydraulic line attachments
- ❸ Telescope: retraction and extension



Forward: the boom lowers
 Backward: the boom lifts
 Left: crowd
 Right: dump

Air conditioning with automatic adjustment*

Select your ideal temperature and enjoy.

*standard or optional, according to the level of finish





DESIGN FOR PERFORMANCE

Because performance is one of your priorities, our agricultural telehandlers offer you features and a choice of transmissions that are well-adapted to your work setting.



THE CORRECT ENGINE POWER = OPTIMIZED FUEL CONSUMPTION

fuel reduction of
up to
-5%*



Motorisation suited to your needs

Each telehandler has the right engine/machine combination for maximum efficiency and minimal fuel consumption.

The NewAg range is equipped with Deutz 4-cylinder engines with a cubic capacity of 3.6 l. With power ranging from 101 hp to 136 hp according to the model, these engines are perfectly suited to your activities.

*compared with our previous, Stage IIIB version





A cleaner engine

In compliance with the Stage IV (FinalTier 4), all NewAg models feature a DOC (Diesel Oxidation Catalyst) valve and a SCR (Selective Catalytic Reduction) catalytic converter with diesel exhaust fluid (AdBlue® or similar).





COOLING SUITED TO YOUR WORK ENVIRONMENT

A cooling system engineered to your needs!

The NewAg cooling system was engineered to ensure long, comfortable workdays. Its electronic adjustment system* allows it to automatically set the speed and rotation of the fan according to the temperature of the engine. This enables you to significantly reduce your fuel consumption.

*option available on the MLT 733 with the automatic reversing fan





Automatic radiator dust removal system

The "auto reversing fan" feature reverses the air flow every three minutes (for 15 seconds) regardless of the engine speed. Cooling is always optimal, especially in very dusty environments such as straw and chicken manure handling.

*option available on the MLT 733





A VARIETY OF TRANSMISSIONS FOR A VARIETY OF TASKS

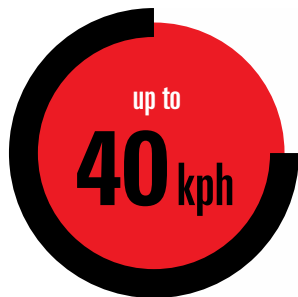
Torque converter with Powershuttle gearbox

Reliable, economic and effective, this transmission is particularly well-suited if you use the machine for tasks such as agricultural loading and off-road or on-road transport. Combined with a four-speed manual gearbox, it allows you to easily adapt your speed to the work at hand.

Torque converter with Powershift Plus gearbox

This transmission is very easy to use. Gears can be changed on the move maintaining constant torque. Simply press the +/- buttons on the JSM® joystick to go through the 6 gears or use the automatic mode. This makes it easier to concentrate on the work at hand.





M-Varioshift

The M-Varioshift enables you to adapt the moving speed up to 40 kph and to adapt the tractive effort according to the task.

Choose your speed with a simple movement directly from the JSM® (+/- buttons). Precision and tractive power: the M-Varioshift guarantees smooth handling.

M-Vario Plus

Yes it is possible to get up to 40 kph smoothly and without changing gear! This continuous variable transmission (CVT) consists of two hydraulic motors with radial pistons powered by a hydraulic pump.

At low speeds, the two motors are active. The tractive power is therefore comparable to that of a torque converter transmission.

At high speeds, only one motor is active.

The maximum speed is reached with no loss of energy so that a high tractive power is retained. Fuel consumption is optimized and the sound pollution caused by the transmission is reduced.

The M-Vario Plus combines precision and performance and is a pleasure to use, even for the most inexperienced users.



2 operating* modes

- **“Comfort” mode**
For more precise operations. This mode is perfect for setting down loads.
- **“Dynamic” mode**
Your MLT will be more responsive during loading operations

Inching* feature

This function allows you to speed up the boom’s movements as you gradually reduce the telehandler’s forward speed.

Eco* mode

The engine speed is optimized while guaranteeing high performances. Fuel consumption and sound pollution are greatly reduced.



* Standard equipment on the M-Varioshift and M-Vario Plus transmissions.

ALL TERRAIN MANOEUVRABILITY

Limited slip differential

To help you get out of tricky situations, the NewAg models include a limited slip on the front axle fitted as standard.



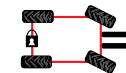
All-terrain handling

- Agricultural profile tires
- High ground clearance making it possible to easily clear obstacles
- Oscillating rear axle to maintain maximum grip and stability
- Four wheel drive
- Optimal turning radius
- Dimensions suitable for agricultural use with a varied range of heights and widths available.

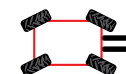


A choice of four steering modes

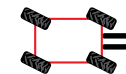
An ultra-manoevrable machine with four steering modes:



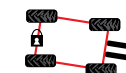
Front wheel steer
for road travel,



4 wheel steer
for manoeuvring in space-restricted work sites,



Crab mode
for sideways approaches and tricky unloading manoeuvres,



Manicrab
mode for tasks such as silage making.



“Active CRC”* **boom suspension**

This system absorbs the unwanted movements of the boom when you drive with or without a load. The components are put under less strain, your load is protected and driver comfort is ensured.

Our new “Active CRC” system operates regardless of the angle of the boom and is automatically activated when driving over 4 kph. At lower speeds, the feature is deactivated to put the priority on movement precision for easier, load handling.

*standard or optional, according to the level of finish.

DESIGNED TO LAST



1. A “double U” boom, welded along the centre, positioned where there is the least amount of strain. Ideal for tough working conditions.
2. Hoses and distributor are protected under the boom.
3. Tilt ram protected behind the boom head.
4. Dana Spicer axles with epicyclic reduction gears.
5. Steering cylinders in a raised position, protected from gravel splatter.
6. Multiple-disk oil-bath brakes within axles.
7. Possibility to change the position of the rear mounted mirror at the back of the machine to avoid breakage risks.
8. Monobloc chassis.
9. Cab compliant with ROPS / FOPS level 2 standards.





CREATE FREE TIME FOR OTHER TASKS...

Simultaneous movements

The Flow Sharing distributor, which is fitted as standard on the MLT 635/733*/737/741/940 models, guarantees simultaneous hydraulic movements on the boom and attachments for more efficient work.

100, 150, or 170 l/min

Combined with the JSM[®], the hydraulic pump of your MLT delivers a maximum flow of 100, 150 or 170 l/min for quick, precise movements.

*optional.





Attachments can be changed **in seconds**

With the Manitou hook-up system, which has equipped our telehandler models for 35 years, attachments can be changed within seconds.

The ECS® (Easy Connect System) decompresses the hydraulic attachment line without turning off the engine, making it quick and easy to change your hydraulic attachments.



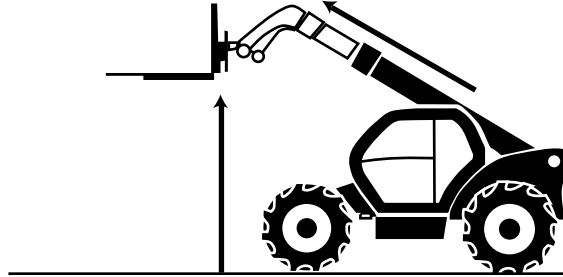
ECS



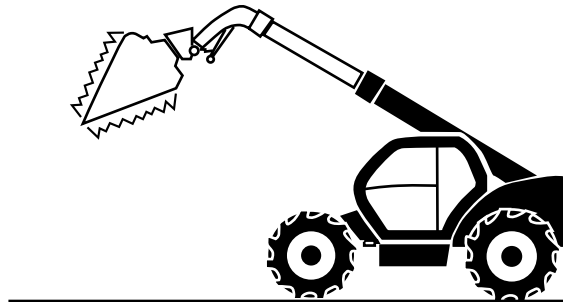
Intelligent Hydraulics (optional)

3 functions

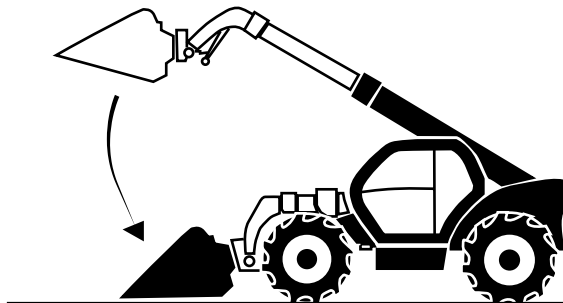
1 - **"Quick Lift"**: automatically allows two simultaneous movements (raising/lowering + extension/retraction) and facilitates stocking operations.



2 - **"Bucket Shaker"**: quickly empties the bucket without requiring the operator to make repetitive movements. Manure will no longer stick to the bottom of the bucket.



3 - Automatic **"Return to Load"**: to easily return to a position (attachment and boom) pre-determined by the operator. This function is particularly useful for loading operations.





Regenerative Hydraulics (optional)

This system makes it possible to lower the boom, regardless of engine speed, using gravitational force. Save time and fuel on every boom lowering manoeuvre.

Hydraulic locking (optional)

The hydraulic locking of the carriage allows you to change and lock the attachment without leaving the cab.





DESIGNED FOR COST-EFFICIENCY

Every possible measure has been taken to actively participate in improving the profitability of your farming operations by reducing work time and reducing the total cost of ownership of your telehandler: easier access to the main components of the machine, reduced maintenance intervals and a "connected" machine.



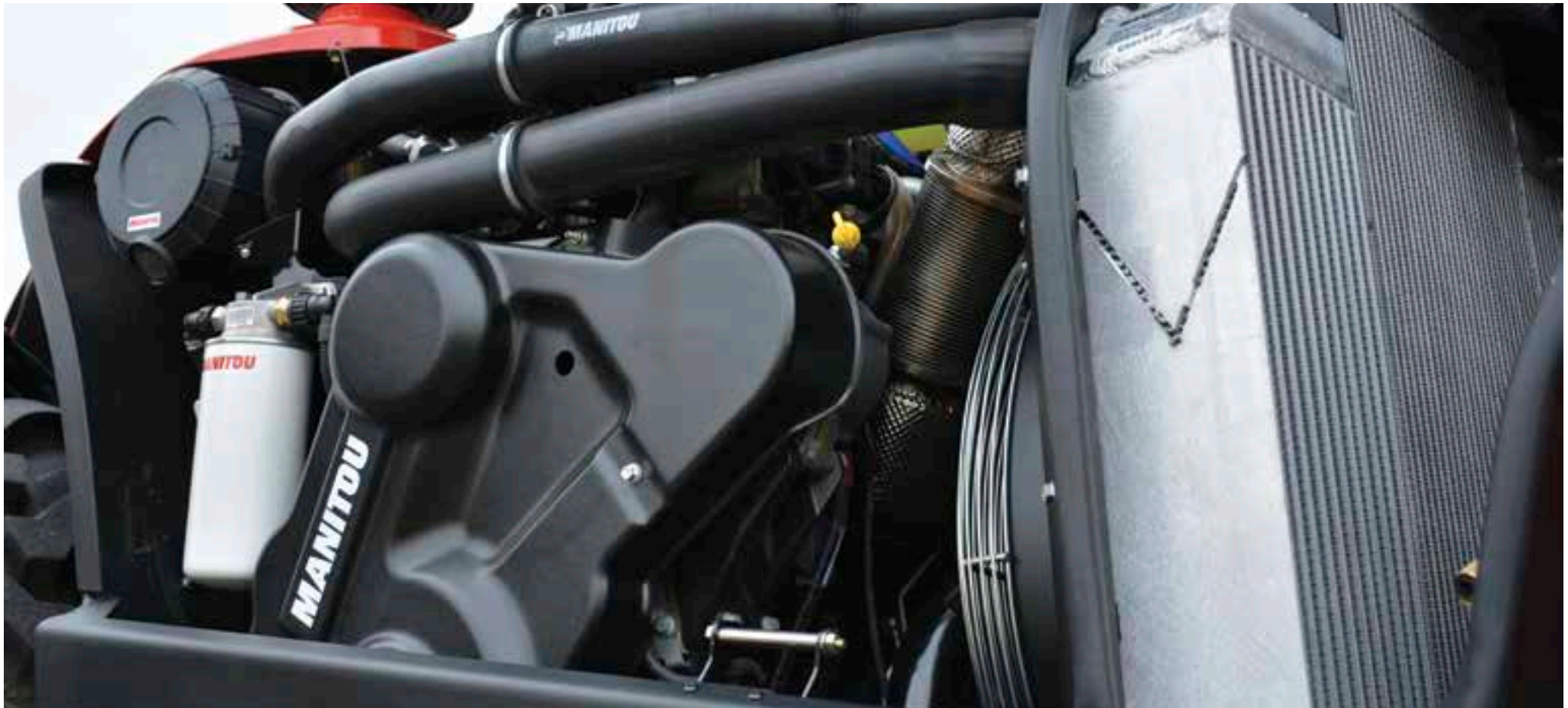
OUR PRIORITY: MAKING YOUR LIFE EASIER



Easy access to the main engine components

Because you have no time to lose, we have engineered the engine compartment to make maintenance easy:

- Wide engine hood opening
- Possibility to blow out the radiators from each side.
- Access hatch (beneath the radiator)
- Easy access to the various filters, oil dipstick and more.





Easy, safe access to the principal tanks

The fuel, urea (AdBlue® and similar) and hydraulic oil tanks are easily accessible, in distinct locations, to prevent the risk of errors.

The brake fluid and windscreen wash tanks are accessible within a closed compartment deliberately positioned outside the cab preventing any risk of spillage inside the cab.

Intelligent maintenance

The dashboard screen displays the maintenance and engine diagnostic intervals.

Optimized maintenance intervals

Hydraulic oil changes are every 2000 hours
(instead of every 1000 hours on previous models).

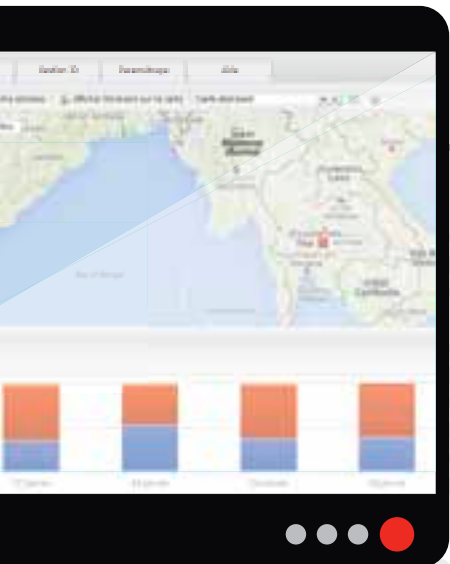
Air filter changes are every 1000 hours
(instead of every 500 hours on previous models).



A CONNECTED MACHINE

Easy MANAGER is a simple and flexible tool to maximize the operational monitoring of your equipment. The option is available at the time of order or as a retro-fit.





Management

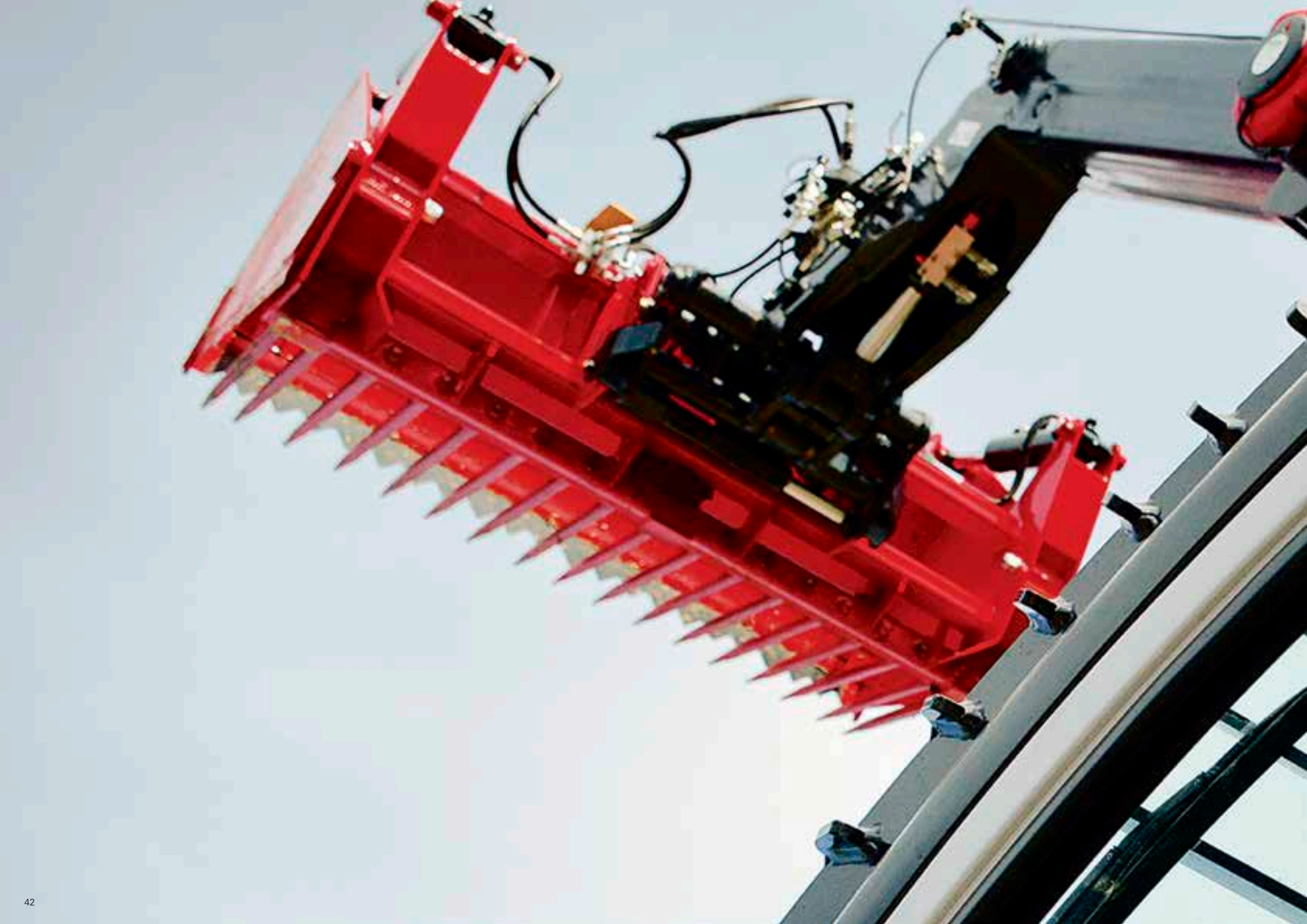
See the machine's geographical location and use in real time.
Increase your machine's availability by allowing your dealer to carry out remote diagnostics.
Control your budget by ensuring optimum machine maintenance.
Maximize the machine's resale value.

Optimization

Entrust the maintenance of your equipment to your dealer, who can access the machine usage data and arrange maintenance operations to suit you.
Analyse your equipment's performances using the dashboard and activity reports to optimize its use and fuel consumption.

Safety

Protect your equipment against theft and fraudulent use by setting up warnings.
Control access to your equipment to authenticate users and ensure their safety.





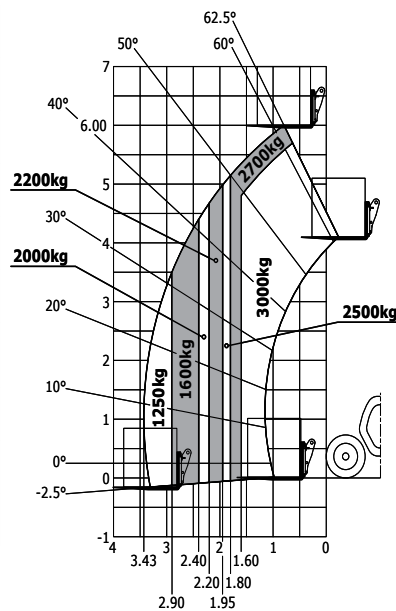
TO EACH HIS OWN... STYLE

Choose from a wide range of telehandlers with a capacity ranging from 3 to 4.1 tonnes and a lifting height ranging from 6 to 9 metres. You also have the choice among various options and finish levels to best suit your needs.



**MLT 630
105 V CP**

Transmission*	H/C/CVT	H
Engine power	hp (kW)	101 (74.4)
Engine brand	-	Deutz
Max. capacity	kg	3000
Max. lifting height	m	6.00
Max. offset	m	3.43
Dimensions without attachments (LxWxH)	m	4.78x2.06x2.14
Hydraulics	l/min	104
Unladen weight with forks	kg	6305
Speed	kph	37

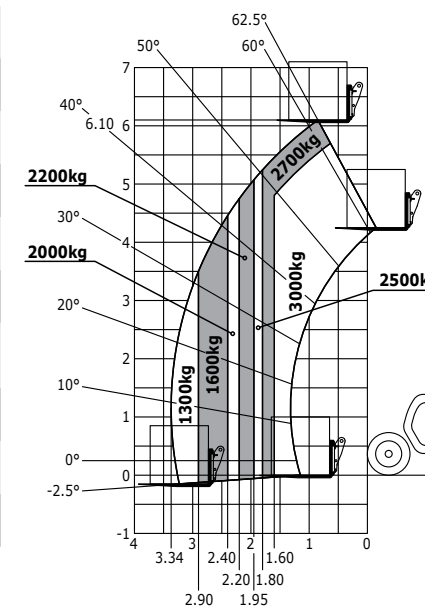


All-terrain load chart (EN 1459 B)



**MLT 630
105 V**

Transmission*	H/C/CVT	H
Engine power	hp (kW)	101 (74.4)
Engine brand	-	Deutz
Max. capacity	kg	3000
Max. lifting height	m	6.10
Max. offset	m	3.34
Dimensions without attachments (LxWxH)	m	4.78x2.13x2.37
Hydraulics	l/min	104
Unladen weight with forks	kg	6465
Speed	kph	40



All-terrain load chart (EN 1459 B)

* H: Hydrostatic
C: Torque converter
CVT: Continuous Variable Transmission

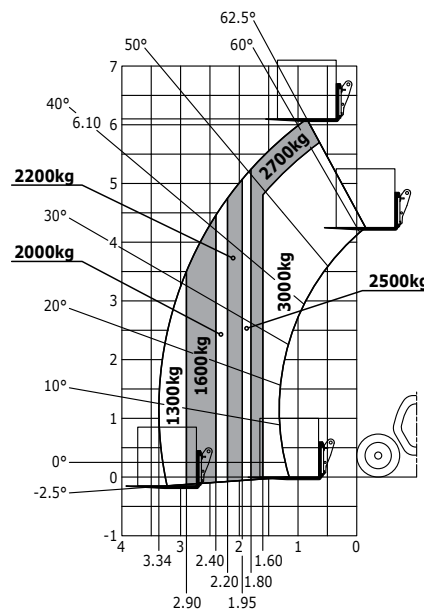


**MLT 630
105**



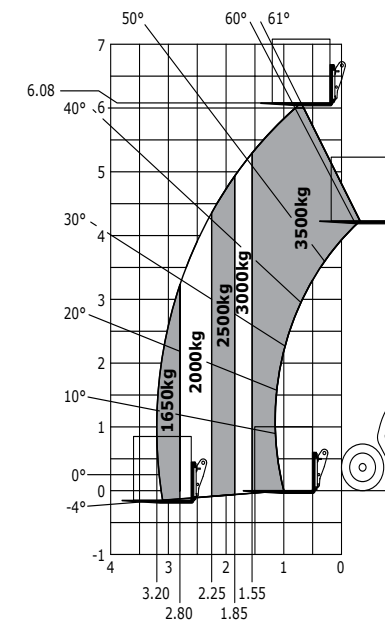
**MLT 635
130 PS+**

Transmission*	H/C/CVT	C
Engine power	hp (kW)	101 (74.4)
Engine brand	-	Deutz
Max. capacity	kg	3000
Max. lifting height	m	6.10
Max. offset	m	3.34
Dimensions without attachments (LxWxH)	m	4.78x2.13x2.37
Hydraulics	l/min	104
Unladen weight with forks	kg	6615
Speed	kph	40



All-terrain load chart (EN 1459 B)

Transmission*	H/C/CVT	C
Engine power	hp (kW)	129 (95)
Engine brand	-	Deutz
Max. capacity	kg	3 500
Max. lifting height	m	6.08
Max. offset	m	3.20
Dimensions without attachments (LxWxH)	m	4.66x2.39x2.38
Hydraulics	l/min	150
Unladen weight with forks	kg	7 405
Speed	kph	40



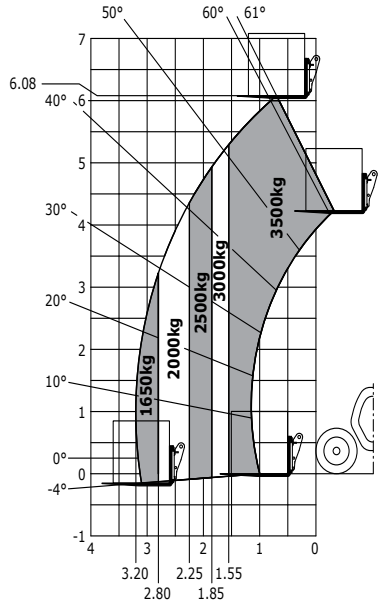
All-terrain load chart (EN 1459 B)

* H: Hydrostatic
C: Torque converter
CVT: Continuous Variable Transmission



**MLT 635
140 V+**

Transmission*	H/C/CVT	CVT
Engine power	hp (kW)	136 (100)
Engine brand	-	Deutz
Max. capacity	kg	3 500
Max. lifting height	m	6.08
Max. offset	m	3.20
Dimensions without attachments (LxWxH)	m	4.66x2.39x2.38
Hydraulics	l/min	170
Unladen weight with forks	kg	7 405
Speed	kph	40



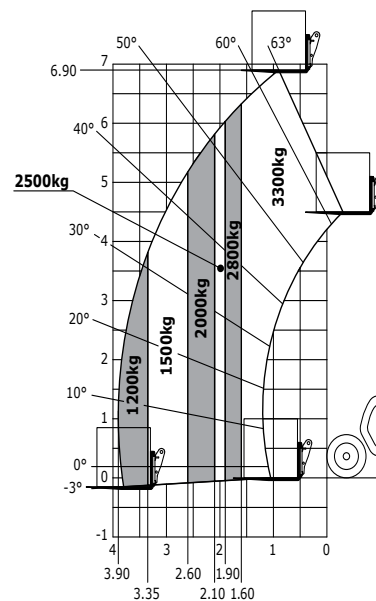
All-terrain load chart (EN 1459 B)

* H: Hydrostatic
C: Torque converter
CVT: Continuous Variable Transmission



**MLT 733
105**

Transmission*	H/C/CVT	C
Engine power	hp (kW)	101 (74.4)
Engine brand	-	Deutz
Max. capacity	kg	3 300
Max. lifting height	m	6.90
Max. offset	m	3.90
Dimensions without attachments (LxWxH)	m	4.85x2.39x2.38 4.78x2.39x2.38**
Hydraulics	l/min	104 / 150***
Unladen weight with forks	kg	7 015
Speed	kph	32

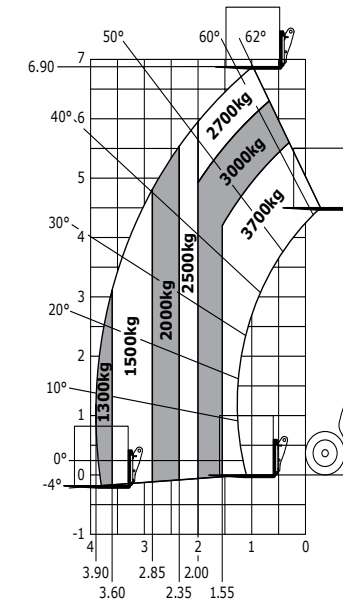


All-terrain load chart (EN 1459 B)



**MLT 737
130 PS+**

Transmission*	H/C/CVT	C
Engine power	hp (kW)	129 (95)
Engine brand	-	Deutz
Max. capacity	kg	3 700
Max. lifting height	m	6.90
Max. offset	m	3.90
Dimensions without attachments (LxWxH)	m	4.97x2.39x2.38
Hydraulics	l/min	150
Unladen weight with forks	kg	7 700
Speed	kph	40



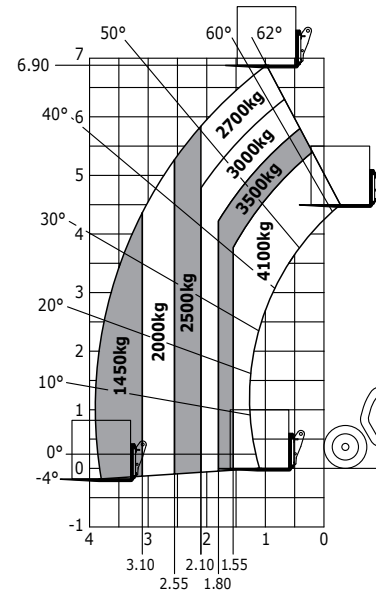
All-terrain load chart (EN 1459 B)

* H: Hydrostatic
 C: Torque converter
 CVT: Continuous Variable Transmission
 ** Without tractor homologation
 *** With pump load sensing



MLT 741 140 V+

Transmission*	H/C/CVT	CVT
Engine power	hp (kW)	136 (100)
Engine brand	-	Deutz
Max. capacity	kg	4100
Max. lifting height	m	6.90
Max. offset	m	3.90
Dimensions without attachments (LxWxH)	m	4.97x2.39x2.38
Hydraulics	l/min	170
Unladen weight with forks	kg	7850
Speed	kph	40

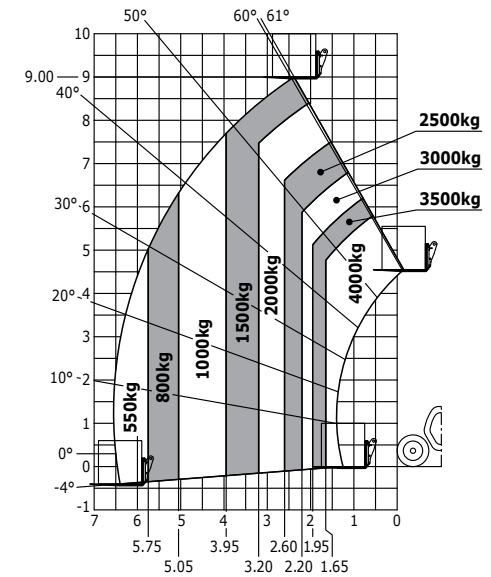


All-terrain load chart (EN 1459 B)



MLT 940 140 V+

Transmission*	H/C/CVT	CVT
Engine power	hp (kW)	136 (100)
Engine brand	-	Deutz
Max. capacity	kg	4000
Max. lifting height	m	9.00
Max. offset	m	6.50
Dimensions without attachments (LxWxH)	m	5.12x2.39x2.38
Hydraulics	l/min	170
Unladen weight with forks	kg	8325
Speed	kph	40



All-terrain load chart (EN 1459 B)

* H: Hydrostatic
C: Torque converter
CVT: Continuous Variable Transmission

3 finish levels available



s: standard / o: option / -: not available

	MLT 630 V CP			MLT 630 V			MLT 630			MLT 635 PS+			MLT 635 V+			MLT 733		MLT 737 PS+			MLT 741 V+			MLT 940 V+					
	CLASSIC	PREMIUM	ELITE	CLASSIC	PREMIUM	ELITE	CLASSIC	PREMIUM	ELITE	CLASSIC	PREMIUM	ELITE	CLASSIC	PREMIUM	ELITE	CLASSIC	PREMIUM	ELITE	CLASSIC	PREMIUM	ELITE	CLASSIC	PREMIUM	ELITE	CLASSIC	PREMIUM	ELITE		
General																													
Active CRC boom suspension	o	o	s	o	o	s	o	o	s	o	o	s	o	o	s	o	o	o	o	o	s	o	o	s	o	o	s		
Hand throttle	o	o	s	o	o	s	o	o	s	o	o	s	o	o	s	-	-	o	o	s	o	o	s	o	o	s	o	o	s
Automatic wheel alignment	o	o	s	o	o	s	o	o	s	o	o	s	o	o	s	-	-	o	o	s	o	o	s	o	o	s	o	o	s
Additional fuel tank (42 l)	o	s	s	o	s	s	o	s	s	-	-	-	-	-	-	-	-	-	-	-	-	-	-	-	-	-	-	-	
Additional fuel tank (25 l)	-	-	-	-	-	-	-	-	-	o	o	o	o	o	o	o	o	o	o	o	o	o	o	o	o	o	o	o	
Manual rotating towing hitch	s	s	s	s	s	s	s	s	s	s	s	s	s	s	s	o/s	o/s	s	s	s	s	s	s	s	s	s	s	s	
Automatic rotating towing hitch	o	o	o	o	o	o	o	o	o	o	o	o	o	o	o	o	o	o	o	o	o	o	o	o	o	o	o	o	
Ladder hitch	o	o	o	o	o	o	o	o	o	o	o	o	o	o	o	o	o	o	o	o	o	o	o	o	o	o	o	o	
Hydraulic pick-up hitch	o	o	o	o	o	o	o	o	o	o	o	o	o	o	o	o	o	o	o	o	o	o	o	o	o	o	o	o	
Comfort																													
Grammer mechanical cloth-covered seat	s	-	-	s	-	-	s	-	-	s	-	-	s	-	-	s	-	-	s	-	-	s	-	-	s	-	-		
Grammer air suspension cloth-covered seat	o	s	-	o	s	-	o	s	-	o	s	-	o	s	-	o	s	-	o	s	-	o	s	-	o	s	-		
Grammer low-frequency air suspension cloth-covered seat	o	o	s	o	o	s	o	o	s	o	o	s	o	o	s	o	o	s	o	o	s	o	o	s	o	o	s		
Car radio tuner (50 W)	s	-	-	s	-	-	s	-	-	s	-	-	s	-	-	s	-	-	s	-	-	s	-	-	s	-	-		
Bluetooth USB car radio with integrated microphone (100 W)	o	s	-	o	s	-	o	s	-	o	s	-	o	s	-	o	s	-	o	s	-	o	s	-	o	s	-		
Bluetooth USB car radio with extra microphone (100 W)	o	o	s	o	o	s	o	o	s	o	o	s	o	o	s	o	o	s	o	o	s	o	o	s	o	o	s		
Manual air conditioning	o	s	-	o	s	-	o	s	-	o	s	-	o	s	-	o	s	-	o	s	-	o	s	-	o	s	-		
Air conditioning with automatic adjustment	o	o	s	o	o	s	o	o	s	o	o	s	o	o	s	o	o	s	o	o	s	o	o	s	o	o	s		
Harmony screen	s	s	-	s	s	-	s	s	-	s	s	-	s	s	-	s	s	-	s	s	-	s	s	-	s	s	-		
Vision screen (7'')	o	o	s	o	o	s	o	o	s	o	o	s	o	o	s	-	-	o	o	s	o	o	s	o	o	s	o	o	s
Electricity / Safety																													
Front and rear work lights (4 or 2 in front + 2 in back)	s	-	-	s	-	-	s	-	-	s	-	-	s	-	-	s	-	-	s	-	-	s	-	-	s	-	-		
Front and rear LED work lights (4: 2 in front + 2 in back)	o	s	s	o	s	s	o	s	s	o	s	s	o	s	s	o	s	s	o	s	s	o	s	s	o	s	s		
Extra front wiper	o	s	s	o	s	s	o	s	s	o	s	s	o	s	s	o	s	s	o	s	s	o	s	s	o	s	s		
Electric mirror with de-icing	o	o	s	o	o	s	o	o	s	o	o	s	o	o	s	-	-	o	o	s	o	o	s	o	o	s	o	o	s
LED + (4 extra work lights)	o	o	o	o	o	o	o	o	o	o	o	o	o	o	o	-	-	o	o	o	o	o	o	o	o	o	o	o	
Boom-mounted LED work lights (x2)	o	o	o	o	o	o	o	o	o	o	o	o	o	o	o	o	o	o	o	o	o	o	o	o	o	o	o	o	
Flat grid on the roof (-2 cm overall height)	o	o	o	-	-	-	-	-	-	-	-	-	-	-	-	-	-	-	-	-	-	-	-	-	-	-	-		
Hydraulics																													
Easy Connect System (ECS)	s	s	s	s	s	s	s	s	s	s	s	s	s	s	s	s	s	s	s	s	s	s	s	s	s	s	s		
Continuous flow hydraulics	o	o	s	o	o	s	o	o	s	o	o	s	o	o	s	o	o	s	o	o	s	o	o	s	o	o	s		
Attachment hydraulic locking	o	o	o	o	o	o	o	o	o	o	o	o	o	o	o	o	o	o	o	o	o	o	o	o	o	o	o	o	
Return pipe to hydraulic oil tank	o	o	o	o	o	o	o	o	o	o	o	o	o	o	o	o	o	o	o	o	o	o	o	o	o	o	o	o	
Electrovalve for 2 hydraulic functions in boom head	o	o	o	o	o	o	o	o	o	o	o	o	o	o	o	o	o	o	o	o	o	o	o	o	o	o	o	o	
Hydraulic trailer braking	s	s	s	s	s	s	s	s	s	s	s	s	s	s	s	o/s	o/s	s	s	s	s	s	s	s	s	s	s	s	
Regenerative Hydraulics	-	-	-	-	-	-	-	-	-	o	o	o	o	s	s	-	-	o	o	o	o	s	s	o	s	s	o	s	s
Intelligent Hydraulics	-	-	-	-	-	-	-	-	-	o	o	o	o	o	s	-	-	o	o	o	o	o	s	o	o	s	o	o	s



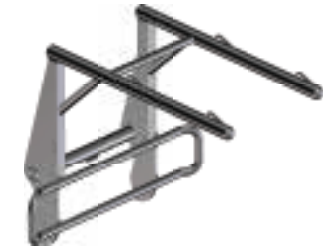
CRS - Silage Facing Bucket

Unloads silage onto the pile and ventilates it, making it directly consumable by animals. Leaves a clean pit face and reduces fermentation.



BSB - Sugar Beet Bucket

Designed for handling sugar beets and other roots or tubers, filtering out soil and other impurities.



HBB - Big Bag Handler

Handles up to four big bags safely for increased efficiency in loading and unloading operations.



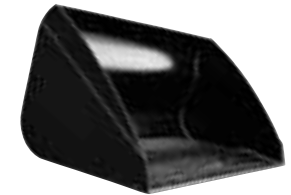
SHG - Shear Grab

Attachment enabling the perfect cutting of all types of silages, thus limiting the fermentation of feed. The quality of the feed, and its nutritional value, are preserved.



SHB - Shear Bucket

Attachment enabling the perfect cutting of maize or grass silage, thus limiting the fermentation of feed. The quality of the feed, and its nutritional value, are preserved. The bucket component makes it possible to handle cereals, mineral supplements, and so on, without changing attachments.



CBA - Agricultural Bucket

The ideal bucket for handling agricultural bulk such as cereals and beetroot pulp. Guaranteed lightweight, sturdy and high-performance. Optionally available with a 500 HB reversible bolted wear blade (LDR).



CBR - General purpose

Bucket suitable for handling heavy materials (max. 2100 kg/m³). Reinforced structure for greater durability. Available as an option with a 500 HB reversible bolted wear blade (LDR).



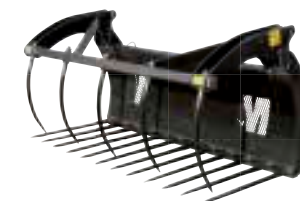
CGD - Feeding bucket

The CGD quickly distributes silage (or a ready-made mix) for animals, offering optimal efficiency.



SCC - Sweeper 2 in 1

Sweep, collect or make swathes: you no longer need to choose! The SCC Sweeper Cleaner offers you a competitive solution and optimal results. Attachments designed for tasks of light to medium intensity.



FMG - Large-Capacity Manure Fork

Large-capacity attachment for handling straw manure. Higher performance and flow, with guaranteed visibility.



CBG MS - Machine-Welded Grab Bucket

A versatile tool for handling feed, manure and agricultural bulk. 1695 l capacity (grab bucket closed) with an incomparable work output.



CBG FO - Forged Grab Bucket

A bucket enabling the precise cutting of the silage pile and the handling of manure. 1695 l capacity (grab bucket closed) with an incomparable work output.



Bale Clamps

Cubed, cylindrical or baled? Manitou offers you a wide range of solutions for stable, effective work that ensures the quality of your bales.

Discover all
our attachments on
manitou.com



Towing hooks

All NewAg machines* are tractor homologated. This means that you are authorised to use them on the road and to tow trailers with assisted braking systems.

Standard towing hook

Equipped with rotating system** for additional safety in case the trailer tips over.

Automatic towing hook

An effective, easy-to-use solution: you no longer need to get down from the cab to hitch a trailer. Simply reverse the machine until the trailer ring enters the hook: the system locks automatically!

Ladder hitch with wide choice of hooks

(simple, automatic, ball, and fixed piton)

The sliding and locking system of the ladder makes it extremely simple to use.

Hydraulic hook

The best solution for supports with rings that are close to the ground when unhitched: the hook itself seeks out the ring! Hitch up from inside the cab, without moving or making an effort.

* Option to choose on the MLT 733.

** Fixed hook for the MLT 733 without tractor certification

Standard towing hook



Automatic towing hook



**RANGE OF
TOWING
HOOKS**

Ladder hitch with wide choice of hooks



Hydraulic "pick-up hitch"





A red tractor is shown in the foreground, carrying a large, round hay bale. The tractor is positioned on a field of golden-brown crops, likely corn. The background shows a vast, flat landscape under a clear sky. A red curved graphic element is positioned to the left of the main text.

MANITOU IS HERE TO HELP !

To provide you with an operational machine year-round, Manitou offers a wide range of products and services that are suited to all your needs.



Expertise and service on a daily basis

Your Manitou dealer guarantees a complete range of services at all stages of your machine's life and is there to provide support and meet your needs, always looking to provide you with the best solution.

1,400 dealers at your service

The Manitou network operates in more than 120 countries. In total, we employ more than 2,000 expert technicians, specially trained in Manitou technology, who are at your service to assist with everything from purchasing to after-sales.



- **Dealership network**
 A network of experts at your service, whatever your field (agriculture, construction, industry).
- **Maintenance contracts**
 We offer three levels of contract to meet with your needs: Initial, Advanced and Excellence. Rest easy and leave the maintenance to your official Manitou dealer
- **Financing**
 To hire or to purchase? Whatever your business, simplify your investment with Manitou Finance financing or leasing solutions.
- **Warranty extension**
 With Maniplus, you can extend the cover of your Manitou warranty for up to 5 years.
 Use your equipment with peace of mind.
- **The connected solution**
 Easy Manager is a simple and flexible tool for managing, optimizing and securing the operational monitoring of your machines.
- **Second-hand equipment**
 In the market for second-hand equipment? The Manitou network is here to help. Just visit your dealer or used.manitou.com, our reference site for second-hand Manitou machines.
- **Original spare parts**
 With more than 70,000 products available, your Manitou dealer provides expertise and service on a daily basis!

REDUCE

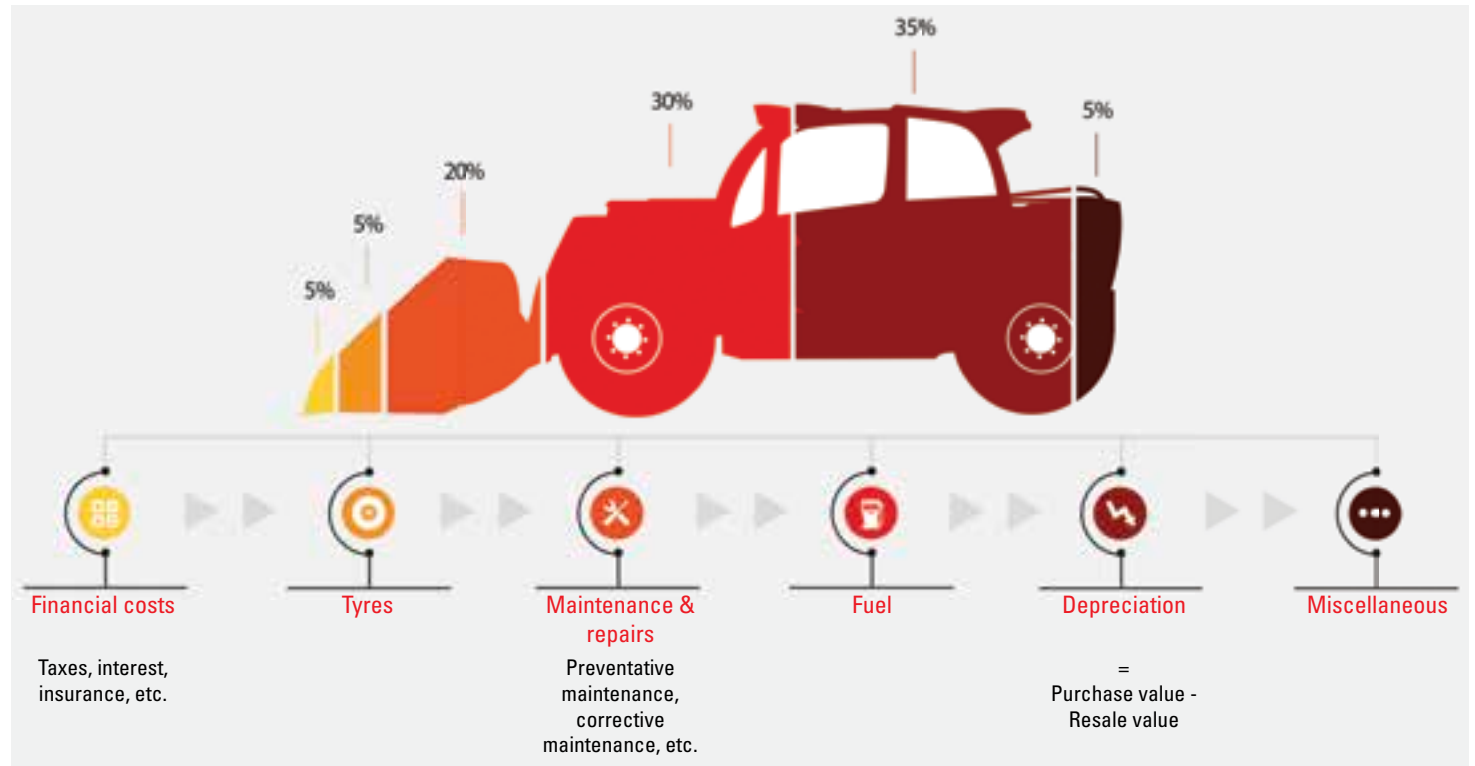
The Manitou group's vision

The REDUCE approach aims to improve the work conditions for machine operators in keeping with better productivity and environmental protection. This means transparency regarding fuel consumption data, reducing emissions, raising awareness of total cost of ownership (TCO), and putting a greater emphasis on the health and safety of operators.

Do you know the real
cost of ownership
of your equipment?



Calculate your TCO on
tco.manitou.com



What does TCO stand for?

The TCO is the total cost of ownership of an asset, more commonly known as the user cost. This indicator takes into consideration fixed costs (such as acquisition, interest, rent and residual value) and also variable costs linked to the use of your machine (such as maintenance and operator training).



Unlike the automobile sector, the handling machine sector does not yet have a standard rating system. We have therefore created a clear internal protocol enabling us to compare our machines' fuel consumption measurements. In order to provide you with clear, reliable and transparent information, this data has been verified by a recognised organisation.



REDUCE Fuel Eco-Program responsibly informs you on the fuel consumption and CO₂ emissions of our MLT and MT machines, as well as our platforms.



Calculate your fuel consumption on reduce.manitou.com

Your dealer:



Head office

B.P. 249 - 430 rue de l'Aubinière - 44158 Ancenis Cedex - France

Tel.: 00 33 (0)2 40 09 10 11 - Fax: 00 33 (0)2 40 09 10 97



This publication provides the description of the versions and configuration possibilities of Manitou products, which may differ in terms of equipment. The equipment presented in this brochure may be available as part of a series, available as an option, or not available, depending on the versions. Manitou reserves the right, at any time and without notice, to amend the specifications described and represented. The specifications provided do not bind the manufacturer. For more details, please contact your Manitou agent. This is not a contractually binding document. The presentation of the products is not contractually binding. The list of specifications is non-exhaustive. The logos and visual identity of the company are the property of Manitou and cannot be used without authorisation. All rights are reserved. The photos and diagrams in this brochure are only provided for consultation and information purposes. Manitou BF SA - Limited company with board of directors. Share capital: 39,547,824 euros - 857 802 508 RCS Nantes